

Syntia

SS



**Café enjoyment
in compact style.**

Automatic Espresso Machine

Enjoy delicious, fresh ground coffee with the touch of a button.

Made in Italy

 **Saeco**

Espresso Feeling

Syntia SS



Protective Coffee Bean Hopper: Air tight sealed lid with anti-UV coating keeps beans fresh at all times.

Adjustable Built-In Ceramic Disc Grinder: With automatic shut-off; safe, quiet and long lasting.

Pre-ground bypass coffee doser.

Saeco OptiDose: Adjustable doser regulates the amount of ground coffee beans for each cup.

Compact Design: Machine enables front access to all features, so it can fit conveniently on any counter.



Steam/Hot Water Knob: Turn dial left to create steam to froth milk for cappuccinos or lattes. Turn the dial right to dispense hot water for Americanos or hot chocolate.

Tri-Colored Digital Display: Three different colors used on the LCD display help to easily identify the functions of the machine.



Rapid Steam®: No waiting between frothing milk with stainless steel Pannarello and brewing espresso.

Adjustable Dispensing Head: Move the coffee dispenser up or down to fit any sized cup or mug.

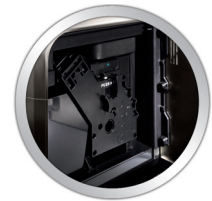
Removable 40 oz. water tank comes with the **Intenza** water filter included.

Saeco Aroma System: Programmable (on/off/long) pre-brewing cycle injects hot water into ground coffee to maximize flavor extraction.



*The Intenza water filter has been designed to improve the taste of your coffee while protecting your machine from limescale damage.

Easy Clean System: Easily removable brew group for chemical-free cleaning.



Drip Tray: Large, metal drip tray holds cups and is removable for easy cleaning.

specifications

Color: Stainless Steel
 Power: 1400 watts - 120 v - UL Listed
 Unit Size: 10"W x 16.5"D x 12.5"H
 Weight: 20 lbs
 Unit Carton: 13"W x 16.5"D x 18"H
 Carton Weight: 24 lbs

Over Pack Carton: 17"W x 22"D x 22.25"H
 Over Pack Carton Weight: 28.5 lbs
 Master Pack Quantity: 1
 Pallet: 20 (5x4)
 UPC Code: 7-08461-10432-8

